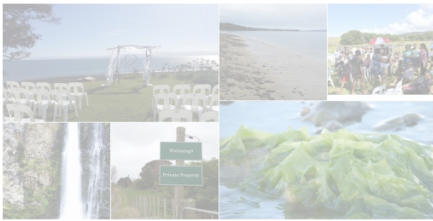




Te Whānau ā Haunui Ahuwhenua Trust - Activity Update - May 2017

Heres a snapshot of what's in this update:

- *Moving along with the Annual & Strategic Planning*
- *New Projects*
- *Treaty Settlements Update*
- *Health & Safety at Waimangō*



Kia ora Whānau

We are well into 2017 and the activities and projects we have planned for this year will be **momentous** - of course we wouldn't be able to get there without your help and support.

Heres a snapshot of what we have been doing since our last newsletter in December:

The Ahuwhenua trust meets bi-monthly and recently held the latest meeting in March in Taupō to allow our Trustees in both northern and southern points of the country to attend.

(Our Trustees are not paid travel costs to attend meetings so we ensure there is adequate notice of meetings with our annual calendar set a year in advance and we can then alternate the venue of our meetings.)

At our March meeting we discussed:

- Managing the improvements and maintenance of the Farm Trust's house at Waimangō
- Future projects and funding applications
- Strengthening our governance with regular sessions and ensuring the use of tikanga within our Trust decision making as an expression of who we are and how we carry out our mahi
- Updating the Trust of the AGM's from Hauraki Trust Board, Hauraki Fisheries and Parehauraki Kaimoana
- Looking at adopting a new Trust Deed
- Our new policies for financial management, koha, property management and health and safety. How we can support arrangements for Uncle Wally's upcoming internment.

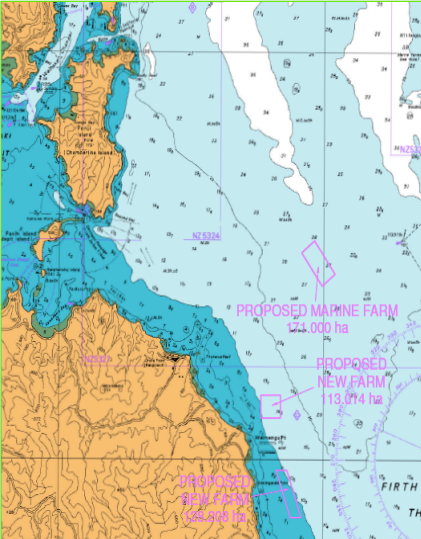
Our session on governance strengthening was our first and it produced some excellent thinking around what it is we want to develop as strengths amongst our Trustees and how

A copy of the Trust's strategic plan is available – for an electronic copy please contact the Secretary:
twah438@gmail.com

Moving along with the Annual & Strategic Planning

<p><i>New Projects</i></p>	<p>knowledge and collective understanding of tikanga can guide how we work together, better understand our roles and responsibilities and help us make sound decisions.</p> <p>Our current year projects list includes:</p> <ul style="list-style-type: none"> • Road Access: Investigating the best option for obtaining independent and direct road access to Waimangō blocks • Mussel Farming: Pursuing the development of mussel farming ventures for TWAH and obtaining the consent to the area immediately in front of Waimangō • House Repairs: Developing a maintenance plan, budget and occupancy policy for the Trust's Farm House • Native Tree Plantations: Starting our manuka honey / native species plantation feasibility project • New Aquaculture Species: Investigating sea cucumber growing under the mussel farms at Waimangō Point • Marine Title & Coastal Interests: Submitting and negotiating our application for title and interests in the seabed and foreshore at and around Waimangō <p>Other new projects in planning / funding stages include:</p> <ul style="list-style-type: none"> • Developng a native kauri plantation at the back of the farm block • Restoring the Waimangō stream and undertaking bank erosion planting • Investigating options for a funeral insurance group plan for TWAH • Collating all records of the Trust particularly the establishment years to scan and make available to all generations for better understanding of where we have come from as a Trust
<p><i>Treaty Settlements Update</i></p> <p><i>Road Update</i></p>	<p>Due to all of the bad weather recently, we have been assisting the local contractors in dealing with the excess material. Some of this has gone onto the beach to create additional level space for camping.</p> <p>We have also been filling in a paddock next to the cowshed which in years gone past was used as a dump by previous leasees. This should provide is extra grazing area once the topsoil is put back.</p> <p>Out of this we will also get an upgraded road down to the papakainga.</p>
<p><i>Health and Safety</i></p>	<p>A reminder to everyone to be mindful of Health and Safety on the Farm. While we don't want the Whanau's enjoyment to be limited, there are a few basic rules.</p> <ol style="list-style-type: none"> 1. Only those authorised by the Farm Manager (Uncle Jim) and with the appropriate training are allowed to use

	<p>any of the farm equipment including the tractors, weeders, chainsaws etc.</p> <ol style="list-style-type: none"> 2. If any equipment is in an unsafe condition and requires maintenance, no-one is to be using the equipment. 3. The Farm Manager must know that you will be on the farm so that he can alert you to any known hazards. <p>We haven't discussed the issue of firearms just yet, but common sense should prevail, please let the Farm Manager know.</p> <p><i>We have committed ourselves to learning 3 Hauraki waiata before our next meeting and will distribute the words and an audio clip to any members also wanting to learn these.</i></p> <ul style="list-style-type: none"> • All of the Trust's assets (land and sea) are being reviewed and assessed for higher value / increased potential • The Trust is seeking to reviewing current grazing agreements and traditional farming practices for higher return more efficient use of resources and environmentally sustainable activities • An assessment and re-alignment of Trustees skill / expertise with the new strategic focus may be required. • The Trust is building relationships with strategic partners in a variety of industries – seeking the best opportunities for innovation and infrastructure. <p><i>What changes you can expect to see:</i></p> <ul style="list-style-type: none"> • Project consultants /scientists working on assessments and testing over various parts of the farm and sea • More relationship events with strategic and enterprise partners • New plantations on the farm block, an entry into aquaculture, increased investment into our infrastructure and a growing interest in our workforce needs <p>We are already working on a number of these projects.</p>
<p>Completion of agreement with Westpac Mussels</p>	<p>Westpac Mussels Limited applied for space in front of Waimangō to develop mussel farms and for the past 3 years, the Ahuwhenua Trustees, lead by a committee including Irene Sheri-Ann and Antony, have been meeting with them to:</p> <ul style="list-style-type: none"> - Discuss how Westpac Mussels could consider our aspirations for Waimangō alongside their plans for developing mussel farms, and, - Negotiate how TWAH and Ngāti Whanaunga ki Wharekawa can work in partnership with Westpac

 <p>OVERVIEW OF PROPOSED MARINE FARM WESTPAC MUSSELS LIMITED</p>	<p>Mussels Ltd to develop mussel farming partnership ventures in and around Waimangō / Wharekawa.</p> <p>On the 28th November 2016, TWAH and Ngāti Whanaunga ki Wharekawa signed an agreement with Westpac Mussels Ltd concluding months of discussion and sensitive negotiations.</p> <p><i>What the agreement provides for:</i></p> <ul style="list-style-type: none"> - Westpac Mussels is to transfer the space in front of Waimangō (aka northern application) to the Ahuwhenua Trust enabling us to hold that space and develop as we see fit. - Westpac Mussels also agree to transfer of 10-15% of space within their central and southern farms jointly to the TWAH Ahuwhenua Trust and Ngāti Whanaunga ki Wharekawa (see maps for approx location and size of mussel farms). <p><i>What this means for TWAH now and in future:</i></p> <ul style="list-style-type: none"> - that we can now develop the Westpac Mussels allocated space for our own aquaculture farming aspirations, - that we have the opportunity to develop venture partnerships with existing industry players (Westpac Mussels Ltd) - that we are building a collaborative partnership with our Ngāti Whanaunga ki Wharekawa relations <p>Davor Antunovic, owner of Westpac Mussels Ltd would like to introduce his family to TWAH and so we will host them at Waimangō in the New Year and we hope that many of our whanau members will join us to cement this relationship and to celebrate this new partnership.</p> <p><i>Thanks to the subcommittee for their hard work in working towards having control over the water space in front of Waimangō and gaining future economic opportunity for all TWAH members to benefit from.</i></p>
<p>Waimangō/Tūwhituaroa Research Committee</p> <p>(Photos from Charles)</p>	<p>Since 2014, Charles, Irene, Sheri-Ann and Antony have represented TWAH on a working party with Tipa Compain and Nathan Kennedy to successfully negotiate an agreement with the existing mussel farmers at Waimangō Point (known as Ngāti Kūtai). That agreement, concluded in late 2015 includes:</p> <ul style="list-style-type: none"> - the establishment of the Waimangō Point/ Tūwhituaroa Research Committee comprising 1 TWAH whanau member, 1 Iwi rep and 2 farming reps - the writing of a long term plan of research and development activity to be undertaken by the

	<p>committee</p> <ul style="list-style-type: none"> - an annual payment to the Committee to undertake ongoing research and development projects - an agreement to provide mussels for Iwi events - an acknowledgement of our / Iwi traditonal and cultural association to the area - an agreement to develop and exchange knowledge (mātauranga and industry) in order to monitor effects on the environment from mussel farming - the granting of resource consent to approve the oversized areas of the existing farms and to approve the in-fill of the current space – total area approved approximately 60 hectares. <p>The current representative members on the Committee includes Tipa Compain and Charles Royal, and from the mussel farmers Alan Bartrom and Dean Aislabie.</p> <p><i>The real opportunity</i> for TWAH with this Committee, is to investigate ways in which we can develop sustainable management of the marine environment from a mana whenua mana moana perspective including the protection of our kaimoana, and developing solutions to mitigate the impacts of mussel farming on the marine environment.</p> <p>Regular updates from the Committee will be sought by the Ahuwhenua Trustees and disseminated to TWAH members via newsletters.</p> <p>The working party have worked arduously to achieve this result and we congratulate and thank them for their mahi.</p> <p>We also acknowledge with gratitude those whānau members who came and supported the celebratory lunch held with the marine farmers this time last year and those attended earlier meetings and hui to form a TWAH baseline and protocols for the negotiations.</p> <p><i>Ehara taku toa i te toa takitahi, engari he toa takitini.</i> 'My strength is not that of a single warrior but that of many'.</p>
--	---

Road access through to the Farm (Waimangō)



Waimangō has long had legal issues with being landlocked and negotiating practical access from the public road to our blocks over neighbouring land. Back in the early 2000's, we were successful in obtaining an easement over the land between Waimangō and the road however the nature of the easement is still restrictive in that it catere for existing use of the blocks only. Given that we are wanting our development to advance beyond current uses to include Papakainga Housing, and other activities, the road access limitations need to be revisited and adapted for present and future needs.

Sheri-Ann and Antony have been working with Auckland Council and Auckland Transport to seek alternative solutions to accessing the Waimangō blocks.

Auckland Council has provided a \$10,000 grant to commission a road engineers report and investigate whether the paper road access is viable for our needs i.e. whether building a road to meet up with the current metal road would provide adequate access and negate the landlocked issue. That is one option.

Auckland Transport has accessed specific funding to investigate whether there are any 're-dress' claims possible – 'how did Waimangō become landlocked?' and what are the obligations of council that could be leverated to assist in the matter.

Discussions are progressing well with Auckland Council and the consultants who are working with us. There are a number of options and a process in front of us that may work well.